

ESH.C

01

**BACK-
GROUND**

EDUCATION

-NANYANG ACADEMY OF FINE ARTS

AUGUST 2011-MAY 2014

DIPLOMA IN 3D DESIGN (FURNITURE DESIGN MAJOR)

-ST ANDREWS SECONDARY SCHOOL

YEAR 2007-2010

GCE 'O' LEVELS

EMPLOYMENT

-ASYLUM CREATIVE PTE LTD

JUNE 2012-JULY 2012

INTERNSHIP

EXHIBITIONS/EXTERNAL/WORKSHOPS

-THAILAND INTERNATIONAL FURNITURE FAIR 2014

2014

BOOTH FOR FURNITURE CRAFT 2014, KMUTT & HAWAII THAI & NAFA

-INTERNATION FURNITURE FAIR SINGAPORE 2014

2014

BOOTH FOR 'TOY SHOP' SERIES, NAFA

BOOTH FOR FURNITURE CRAFT 2014, KMUTT & HAWAII THAI & NAFA

-ECOLOGY IN THE URBAN CITY

2013

EKOBO & NAFA WORKSHOP AND EXHIBITION

-CHRIS LEFTERI MATERIAL EXPLORATION WORKSHOP

2013

-CHRISTMAS CHARITREES @ MARINA BAY

NOVEMBER 2012

2 GROUP DESIGNS SELECTED AND SELF-FABRICATED

-SATURDAY IN DESIGN, KOKUYO CO LTD

OCTOBER 2012

DESIGNER FOR COLLABORATION INSTALLATION

MEDIA COVERAGE

-HOME AND DECOR MAGAZINE

MAY 2014 ISSUE

PAGE 60 'FURNITURE CRAFT SHOWCASE'

-YAHOO! NEWS

12 NOVEMBER 2012

'CHRISTMAS CHARITREES LIGHT UP MARINA BAY'

-URBAN REDEVELOPMENT AUTHORITY

9 NOVEMBER 2012

'ECO-FRIENDLY CHARITREES LIGHT UP MARINA BAY FOR COMMUNITY CHEST'

OTHERS

-ECOLOGY IN THE URBAN CITY

AUGUST 2013

EMCEE

-HTC LIKES AWARDS 'BEST DANCE MOVES'

2011

FINALIST

-PHOTOGRAPHY VIBES 'BEST OF' EDITION

2010

PUBLISHED IN PHOTO JOURNAL

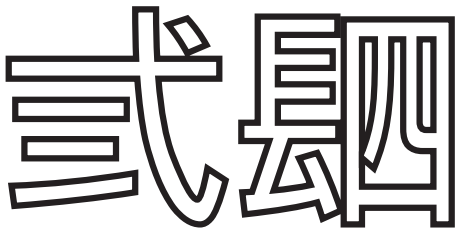
-SINGAPORE YOUTH FESTIVAL CENTRAL BAND JUDGING, MILITARY BAND

2009

AWARDED 'GOLD WITH HONORS'

02

FURNI-
TURE



sān sì

In traditional mandarin writing, "sān" represents the number "three", and "sì" represents the number "four". We named our furniture set after the numbers three and four according to number of legs our table and chair has. The main idea was influenced by traditional oriental furniture designs. Our aim was to preserve the form and essence of the traditional oriental look but re-create it with a simplistic, but capturing design. Just like the traditional style of writing which is more complicated then our current form of mandarin, traditional furniture led the way for our current designs to become more simple and yet effecient.





Collapsible Table

Teh Bo is inspired from the old common foldable tables which can be found in coffeeshops and homes around Singapore. Teh Bo takes aspects such as black pipe legs and the plywood table top to create a familiar feeling to the table, at the same time, by designing a more efficient folding mechanism it has been remade to be placed within the smaller spaces of current HDB flats.





Plisse is a fashion term which takes from the French word 'Plisser', meaning to fold, crease and pleat. This bench was inspired by the folding of collars, sleeves and cuffs in fashion. At the same time, I aim to bring an edgy atmosphere to the mall with this bench.

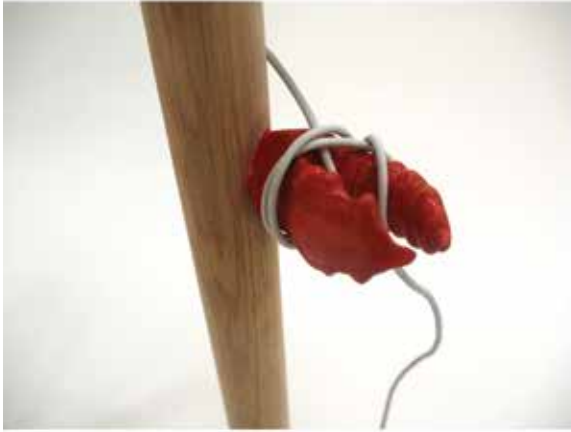
Folds define the shape and style of each piece of clothing produced. Taking from this idea, my aim is to use these folds to define this bench created from one singular piece of material. The colors used for this bench aim to show both the iconic men's fashion section and the trendy culture Orchard Gateway. The black and white represent the classic tuxedo of men's fashion, often being recognized by its iconic cut and collar of the suit. The red and blue take on a younger and more urbanized style, adding a vibrant and capturing perspective to the mall emphasizing the style of Orchard Gateway.





The Kuti Cuti Study Table is created with the combination of the inspiration of retro Kuti Kuti toys and the use of the technologically advanced Computer Numeric Control (CNC) router machine. With the ability to create intricate carvings and complex shapes, I extracted iconic characteristics from the Kuti Kuti toys and incorporated them into the table, creating a marriage of playfulness and precision. At the same time, its size is optimized for a small work area, inclusive of laptops and tablets to notebooks and stationary.

This furniture was exhibited in the International Furniture Fair Singapore 2014, under the 'Toy Shop' Series.





This project was a collaboration between NAFA, King Mongkut's University of Technology Thonburi and Hawaii Thai. My team designed a set of furniture based on the theme of chinatown in Singapore. At the same time, the production being carried out by Hawaii Thai in Thailand, meant that the main material used had to be contained to rattan.

Following the completion of production, this series of furniture was showcased at International Furniture Fair Singapore 2014 and the Thailand Internation Furniture Fair 2014.





THE
TRANSITIONAL
FURNITURE

A set of furniture consisting of a stool, a mirror chalkboard unit and a storage unit. This series intertwines the classic retro look of homely furniture with the detailing of a contemporary home. It creates a language that is easily fitted into a new home, and yet evokes the comfortability of one that is familiar. With details that have been acutely designed to the needs of contemporary users, its utility is optimized without discounting on its aesthetics, creating a timeless combination.



03

INT-
ERIOR

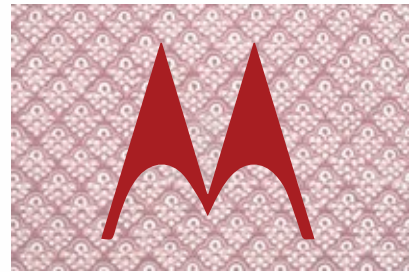


CAMPER

Retail Store

Camper focuses on irony and the environment that their store is being built in. The theme for this store is the Urban Countryside.





Corporate Office

The theme of this office design was Kaleidoscope. It was to be situated in a shophouse, thus, I included peranakan aspects into the design.



04

EXTER-

NAL

PROJECTS

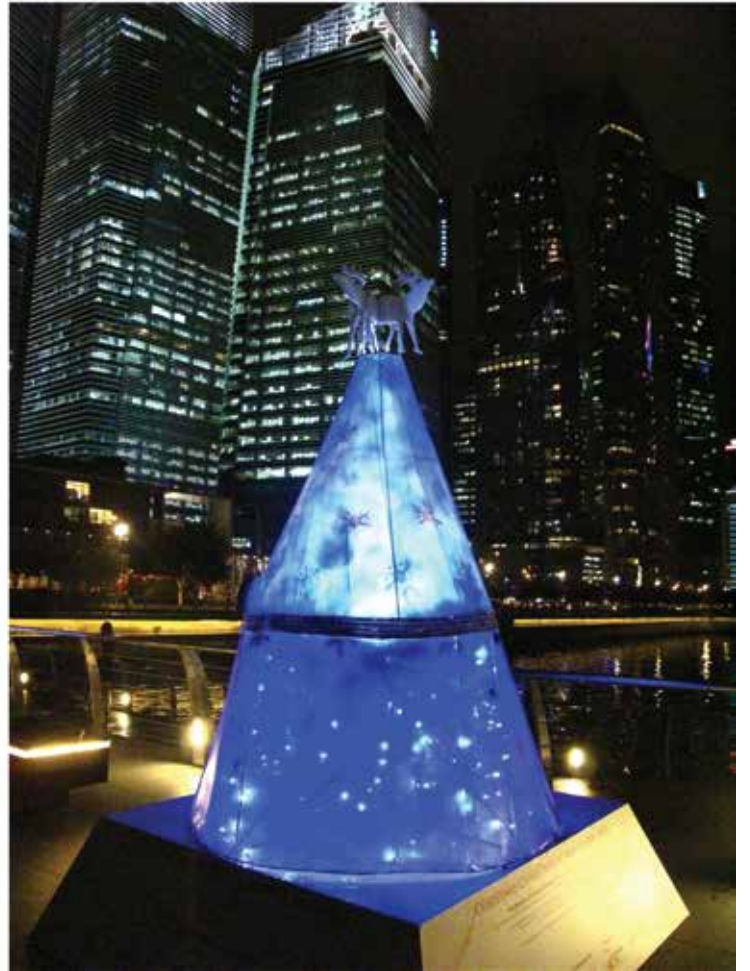


This project had a theme of air. After brain storming we decided to focus on two main styles to materialize this theme within. One was bubbles and the other was clouds. The plastic bubbles were then strung around the first floor and the second floor of the office, this created the feeling of the bubbles floating around as they seemed to hang from nothing. The clouds were then created at the meeting room area of the second floor, creating a ceiling entirely enclosed by cloud like features made from tracing paper. The team and myself took this project from brainstorming to proposing the designs, and ultimately installing the space ourselves.





My team and myself had two of our designs picked to be created for this event. The first was named "Wishes Multiplied" which embodied the idea of receiving and giving during the Christmas period. The triangle foam pieces were passed to children of Metta School and they cut out hearts from the foam sheet. The cut outs were kept by the children as a gift and representation of their wishes, and the foam triangle cut out is used as decoration for the tree. The second tree was named "Nostalouette". It was formed by layering layers of translucent plastic sheets. The inner layer had cut outs of Christmas symbols such as Santa Claus and snow flakes. This inner piece was connected to the top wind vane, which spun with the wind and created a moving show of Christmas.

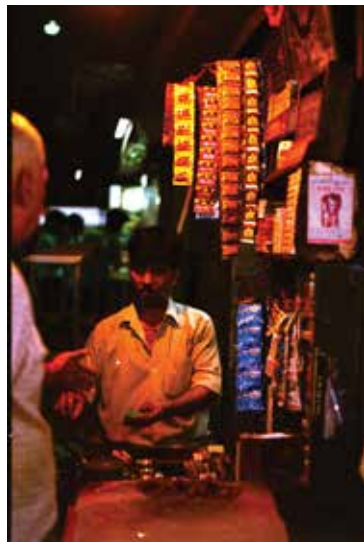


05

PHOTO-
GRAPHY



Growing up in a family that dabbled with film cameras in our free time, this similar passion grew to be a hobby that has allowed me to connect with cultures and have an intimate perspective towards people and places. With a love for travelling, I have had the opportunity to grow up in the cultures of India, and at the same time visit places filled with architecture and history such as Prague. However, often enough it is what is closest to home that is often overlooked, such as hidden gems within Singapore itself. Thus, photography has also led me to explore more within the Singaporean culture and history, at the same time, influencing my design to often be in touch with my diverse background.





ESHTON CHUA EN ZHONG
ESHTON.C@HOTMAIL.COM
+65 94555501